

---

## Schedule of Events

Superfund 101 will be held Monday, March 26 - Friday, March 30, 2012, at the U.S. EPA Region 7 office in Kansas City, Kansas. The training begins each day at 8:30 a. m. and ends at 4:30 p.m. each day, except for Friday, the course ends at 3:00 p.m. Please plan your flights accordingly.

The U.S. EPA Region 7 office is located at:

901 North Fifth Street  
Kansas City, KS 66101

<http://www.epa.gov/aboutepa/region7.html>

**Please note:** The training will be held at the U.S. EPA Region 7 in Kansas City, Kansas; a sleeping room block is set up at The Westin Crown Center in Kansas City, Missouri. Refer to the section on transportation below.



---

## The Westin Kansas City at the Crown Center

The Westin at the Crown Center  
One East Pershing Road  
Kansas City, Missouri 64108  
Phone: (816) 474-4400

For additional information about The Westin, visit:

[www.westin.com/KansasCity](http://www.westin.com/KansasCity)



---

## Sleeping Room Reservations

A block of rooms has been reserved at The Westin in Kansas City, Missouri. The lodging rate is the prevailing government rate of \$99 per night plus 15.225 percent sales tax and a Kansas City Development Fee of \$1.73 per night. Reservations need to be made before **5:00 p.m. Central Time on Friday, March 16, 2012**, to receive the government rate.

Included under the EPA room block is complimentary Internet access in your sleeping room.

To reserve your room online visit: <http://www.starwoodmeeting.com/StarGroupsWeb/res?id=1110149437&key=5026> and click the "Reserve" tab to enter your dates.

To make your sleeping room reservation by telephone, call (888) 627-8538 and be sure to mention that you are attending the **EPA Superfund 101**.

EPA Headquarters will cover the lodging expenses only for all EPA Remedial Project Managers (RPMs) and EPA On-Scene Coordinators (OSCs) at The Westin. If you choose to stay at another hotel, your region will be responsible for the cost of your lodging and EPA Headquarters will be sending notification to your manager about your decision to stay at a different hotel.

Reservations at The Westin must be confirmed with a credit card. For EPA RPMs and EPA OSCs, you are responsible for covering incidental charges and guaranteeing your arrival with a credit card.

You are responsible for cancelling your hotel reservation if you cannot attend. The Westin requires a notice of cancellation by 5:00 p.m. Central Time, 24 hours before the day of your scheduled arrival. If you fail to provide notice, one night's lodging and tax will be charged to your credit card.

Upon check-in you will be asked to verify your departure date; if you check-out earlier from your verified departure date, an early departure fee of \$75 will be charged to your credit card.

Hotel check-in begins after 3:00 p.m., and check-out time is at 12:00 p.m.

---

## Daily Transportation to and from EPA Region 7

Daily transportation will be provided each day to take attendees round trip from The Westin to the U.S. EPA Region 7 office to reduce regional travel expenses and to avoid rental cars. The shuttle will depart The Westin for the U.S. EPA Region 7 building each morning at 7:45 a.m. and return you to The Westin following the course each day. On Friday, March 30, 2012, the shuttle will depart directly to the Kansas City International Airport (MCI) when the class concludes at 3:00 p.m. Please plan your return flight accordingly since the shuttle will depart the U.S. EPA Region 7 office no later than 3:15 p.m. For those attendees who need to return to The Westin, taxi rides will be organized on Friday.

---

## What to Pack for the Kansas City Area

Dress is casual for Kansas City weather. Temperatures range from 40°F at night to 60°F during the day. Please be advised that the temperatures in the training room do not reflect temperatures outside. Be sure to pack a light jacket or sweater to wear while you attend Superfund 101.

---

## Dining and Entertainment

The Westin offers several on-site restaurants:

- ❖ The Brasserie, open daily from 6:30 a.m. to 11:00 p.m., serves contemporary American cuisine including a breakfast buffet, bison burgers, Kansas City-style BBQ ribs, and lamb shank.
  - ❖ Benton's Prime Steakhouse, serving dinner, is open from 5:30 p.m. to 9:00 p.m. Tuesday - Thursday and 5:30 p.m. to 10:00 p.m. Friday and Saturday. Benton's Prime Steakhouse is located on the 20th floor of The Westin.
  - ❖ Room service is available 24 hours a day.
- 

## Health, Fitness, and Recreation

The Westin offers several amenities, including a fitness center with treadmills, stationary bikes, rowing machines, elliptical, and Stairmaster machines. The fitness center is available for a fee from Monday - Friday from 5:00 a.m. to 10:00 p.m. and Saturday and Sunday from 7:00 a.m. to 10:00 p.m. Jogging trails also are available near the hotel. The Westin also offers two lighted tennis courts available for hourly rental.

---

## Travel Information

The Kansas City area is served by Kansas City International Airport (MCI). MCI is located approximately 25 miles from downtown Kansas City, Missouri. Additional information for MCI is available at [www.flykci.com/](http://www.flykci.com/)

Kansas City, Missouri is located in the Central Time Zone.

---

## Ground Transportation

SuperShuttle provides transportation from MCI to The Westin. The blue SuperShuttle vans are located outside of baggage claim at each Terminal. Reservations are required from the airport and can be made by calling (800) 258-3826. Return service from the hotel to MCI is available and does not require a reservation. The shuttle departs from The Westin every 30 minutes at 10 and 40 after the hour. One-way fare between MCI and The Westin is \$17. Additional information about SuperShuttle is available at [www.supershuttle.com/](http://www.supershuttle.com/)

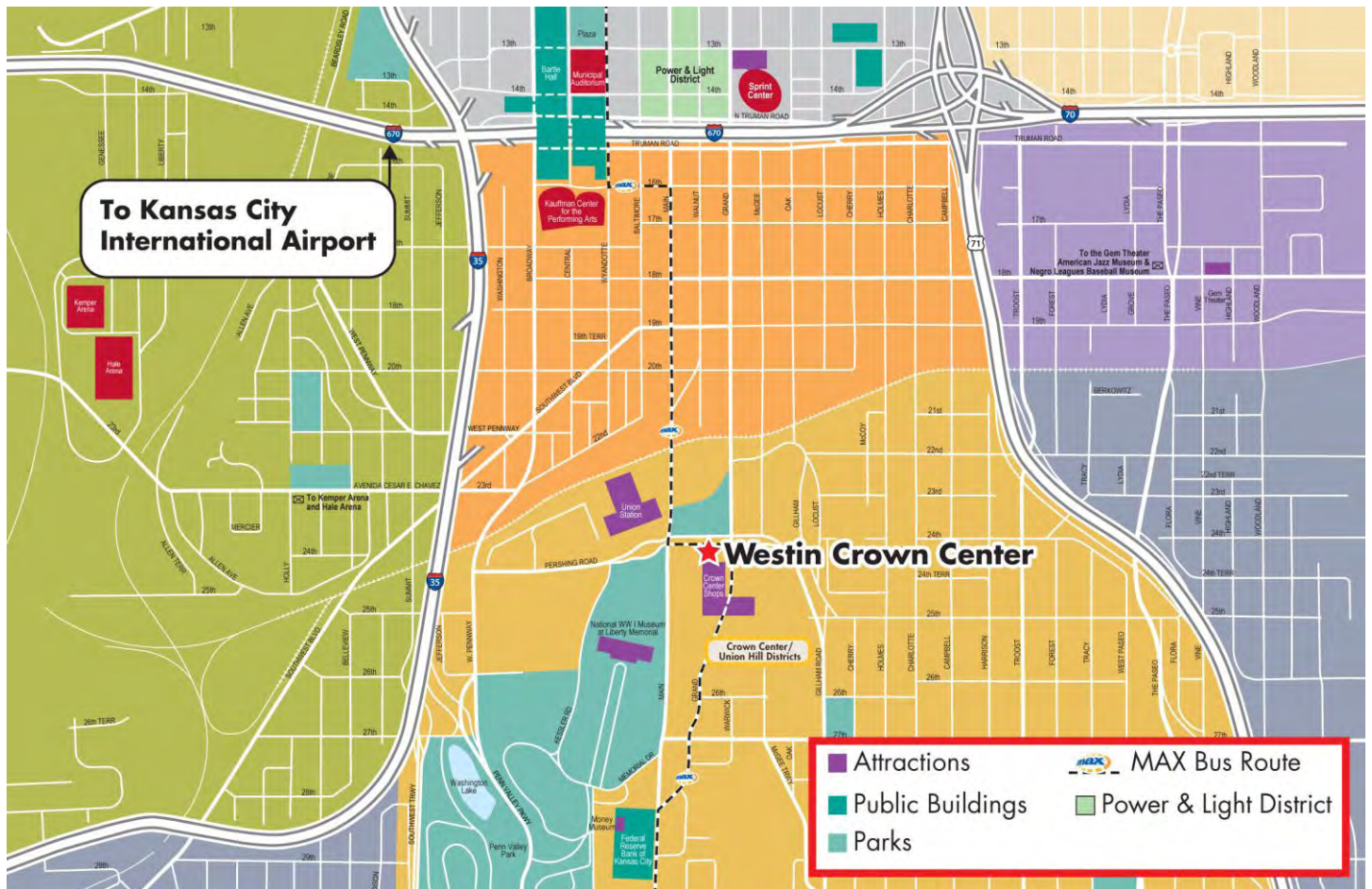
Taxi fare between MCI and the hotel is approximately \$50 each way, not including gratuity.

Valet parking is available at The Westin for \$19 per night with in and out privileges. Self parking is available at The Westin for \$15 per night with in and out privileges.

Union Station Depot, serving Amtrak's Kansas City Rail line (KCY), is located approximately two blocks from The Westin. Visit [www.amtrak.com/servlet/ContentServer?pagename=am/am2Station/Station\\_Page&code=KCY](http://www.amtrak.com/servlet/ContentServer?pagename=am/am2Station/Station_Page&code=KCY) for additional information about KCY.



## Driving Directions from MCI to The Westin



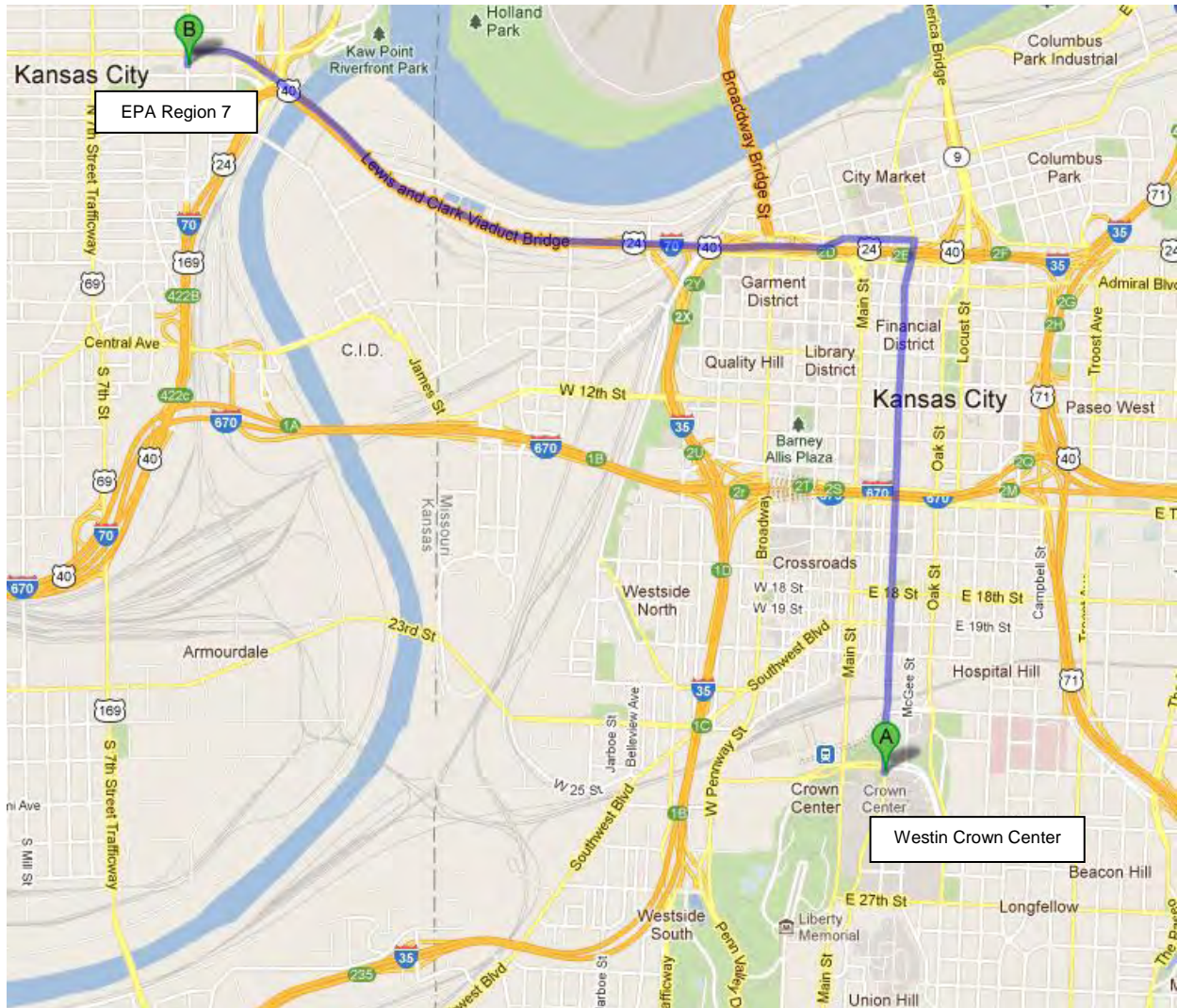
**The Westin Kansas City at the Crown Center**  
**One East Pershing Road, Kansas City, Missouri 64108**  
**Phone: (816) 474-4400**

### From MCI Airport

**Approximately 25 miles, 30 minutes**

- ❖ Exit the airport and take I-29 South to Highway 169 South
- ❖ Continue on Highway 169 South across the Broadway Bridge over the Missouri River
- ❖ Highway 169 becomes Broadway (do NOT turn right)
- ❖ Follow Broadway for 18 blocks to Pershing Road and turn left onto Pershing Road
- ❖ The Westin is less than 1 mile on the right hand side of the street

## Driving Directions from The Westin to the U.S. EPA Region 7



### U.S. EPA Region 7 901 North Fifth Street, Kansas City, Kansas 66101

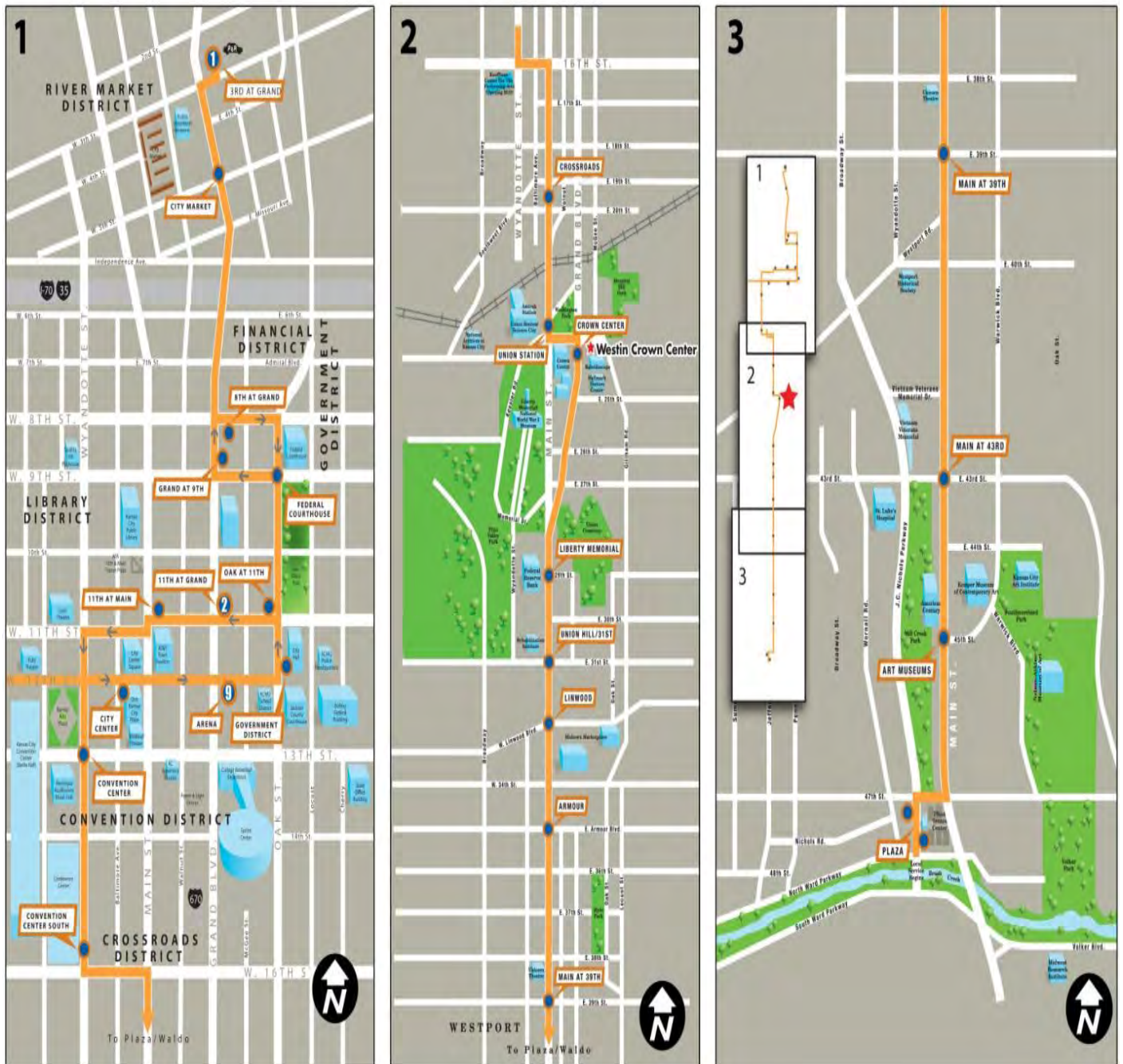
“Note: Parking is available at the U.S. EPA Region 7 office. Participants who plan to drive and park at the U.S. EPA Region 7 office should email their names to [joseph.gawarzewski@tetrattech.com](mailto:joseph.gawarzewski@tetrattech.com) so that they can be provided to security. Only those who do so will be allowed to park for free in the circular parking lot directly in front of the U.S. EPA Region 7 Office at 901 North Fifth Street. If you do not, please be advised that there are also several metered and self-park lots near the U.S. EPA Region 7 available for a fee.

### From The Westin

#### Approximately 5 miles, 12 minutes

- ❖ Turn right on East Pershing Road
- ❖ Turn left on Grand Boulevard
- ❖ Turn left on East Independence Avenue
- ❖ Take ramp on left onto I-35 South/I-70 West/US-24 West
- ❖ Continue to follow I-70 West/US-24, enter Kansas
- ❖ Take Exit 243C, Minnesota Avenue
- ❖ Keep left at fork, follow signs for Minnesota Avenue
- ❖ Turn left onto North Fifth Street, the U.S. EPA Region 7 office will be on your left

## Local Public Transportation



The Metro Area Express (MAX) bus rapid transit service operates along the Main Street Corridor from the River Market in the North, through downtown, past Union Station and Crown Center, and on to the Country Club Plaza. MAX operates seven days a week from 5:00 a.m. to 1:00 a.m. and costs \$1.50 each way. The fee is collected on board the bus and allows for free transfers to the rest of the Metro system. Visit [www.kcata.org/maps\\_schedules/max/](http://www.kcata.org/maps_schedules/max/) for additional information on MAX. Each blue dot on the map represents a Max station.